



**Republic of Lebanon
Presidency of the Council of Ministers**

Emergency National Poverty Targeting Program

Temporary E-Card Food Voucher

November 2014 – February 2015



Prepared by:

Central Management Unit, May 2015

ACKNOWLEDGMENT

The Central Management Unit of the National Poverty Targeting Program would like to acknowledge the professionalism of the World Food Programme – Lebanon in handling the issuance, upload and monitoring of the e-card food voucher. Moreover, CMU would like to thank WFP – Lebanon for sharing the monthly reports related to the e-card.

The Emergency National Poverty Targeting Program, ENPTP, a World Bank project, began implementing the temporary e-card food voucher benefit as of November 2014. This new service is provided in cooperation with the World Food Programme. The e-card, in addition to the initially provided services of health and education, would entitle each member in a beneficiary HH with US\$30 per month up to 6 members per HH. That is, the maximum amount that a beneficiary HH would get is US\$180 per month.

UNHCR financed the e-card food voucher benefit from November 2014 till February 2015 with an amount of US\$3.2 million.

Based on the available funds, the Central Management Unit, CMU, at the Presidency of the Council of Ministers, selected the poorest 27,209 member on the national level. These members represented 5,076 HHs, 7.6% of the total number of the beneficiary HHs classified until October 2014.

Around 95% of the beneficiaries of the e-card food voucher were living in North Lebanon and Bekaa Governorates with 83% and 11% respectively. This is due to the fact that the most extreme poor Lebanese HHs are living in these two governorates. Table 1 shows the distribution of the e-card beneficiaries by governorate. The beneficiaries were living in 505 different localities distributed all over Lebanon except Beirut Governorate.

Table 1: Distribution of the E-Card Food Voucher Beneficiaries by Governorate

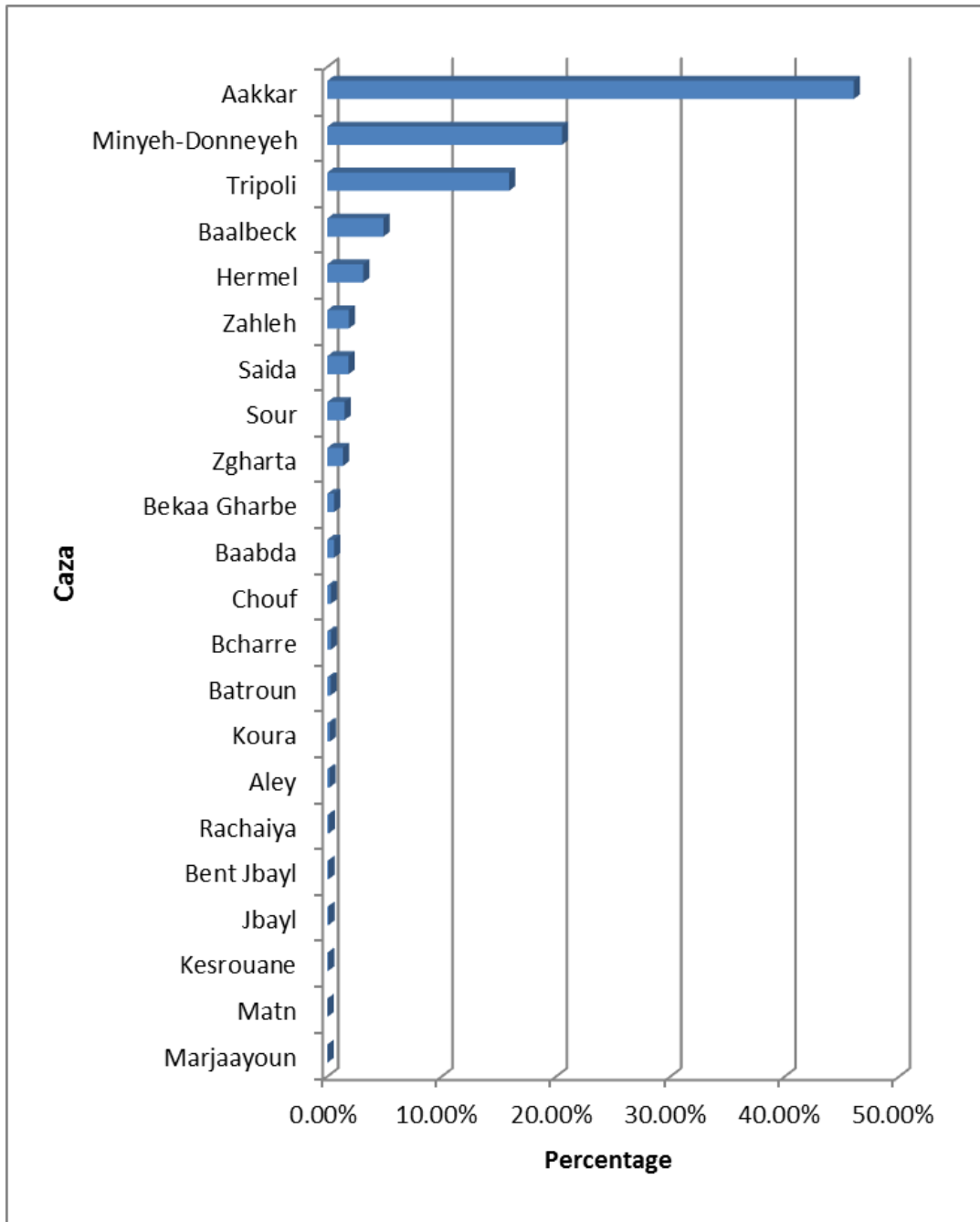
Governorate	HHs	Percentage
Nabatiyeh	7	0.1%
Mount Lebanon	74	1.5%
South Lebanon	186	3.7%
Bekaa	569	11.2%
North Lebanon	4,240	83.5%
Total	5,076	100.0%

As for the distribution of the e-card beneficiary members by Caza, Aakkar had the highest share of beneficiaries with 46%, 14,910 members. It was followed by Minyeh-Donneyeh and Tripoli with 20.5% and 16% respectively. This shows that the most extreme poor Lebanese HHs are much concentrated in the Caza of Aakkar compared to the remaining Caza. On the other hand, the least number of members benefiting from the e-card were living in the Caza of Marjaayoun and Matn with a share of 0.01% and 0.02% correspondingly.

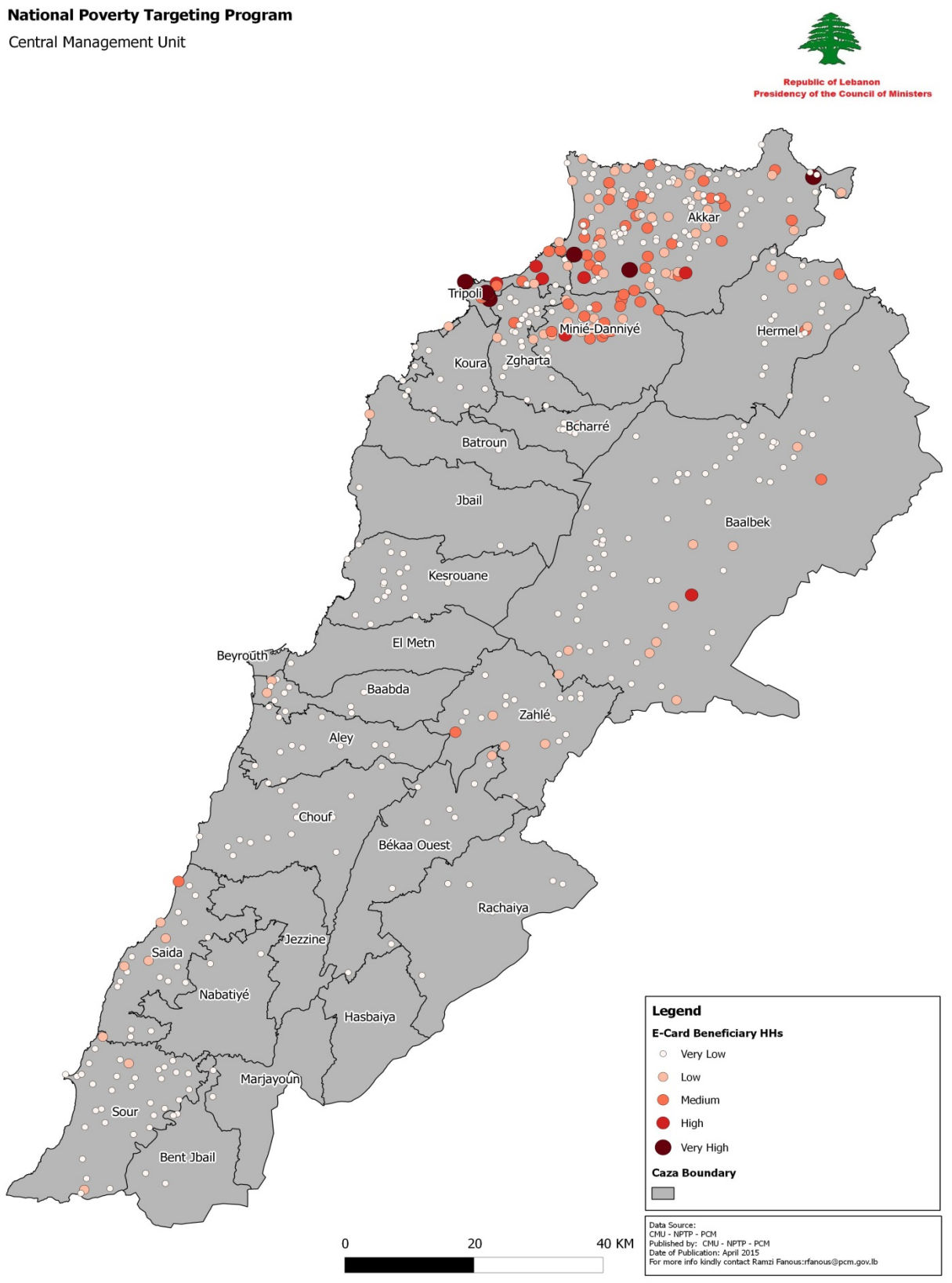
Table 2: Distribution of Total Number of Beneficiary E-Card Food Voucher Members by Caza

Caza	Total Number of Members	Percentage
Marjaayoun	3	0.01%
Matn	5	0.02%
Kesrouane	23	0.07%
Jbayl	32	0.10%
Bent Jbayl	35	0.11%
Rachaiya	46	0.14%
Aley	64	0.20%
Koura	75	0.23%
Batroun	87	0.27%
Bcharre	100	0.31%
Chouf	102	0.31%
Baabda	188	0.58%
Bekaa Gharbe	193	0.60%
Zgharta	439	1.36%
Sour	485	1.50%
Saida	596	1.84%
Zahleh	610	1.88%
Hermel	1,013	3.13%
Baalbeck	1,587	4.90%
Tripoli	5,149	15.90%
Minyeh-Donneyeh	6,643	20.51%
Aakkar	14,910	46.04%
Total	32,385	100.00%

Figure 1: Distribution of Total Number of Beneficiary E-Card Food Voucher Members by Caza

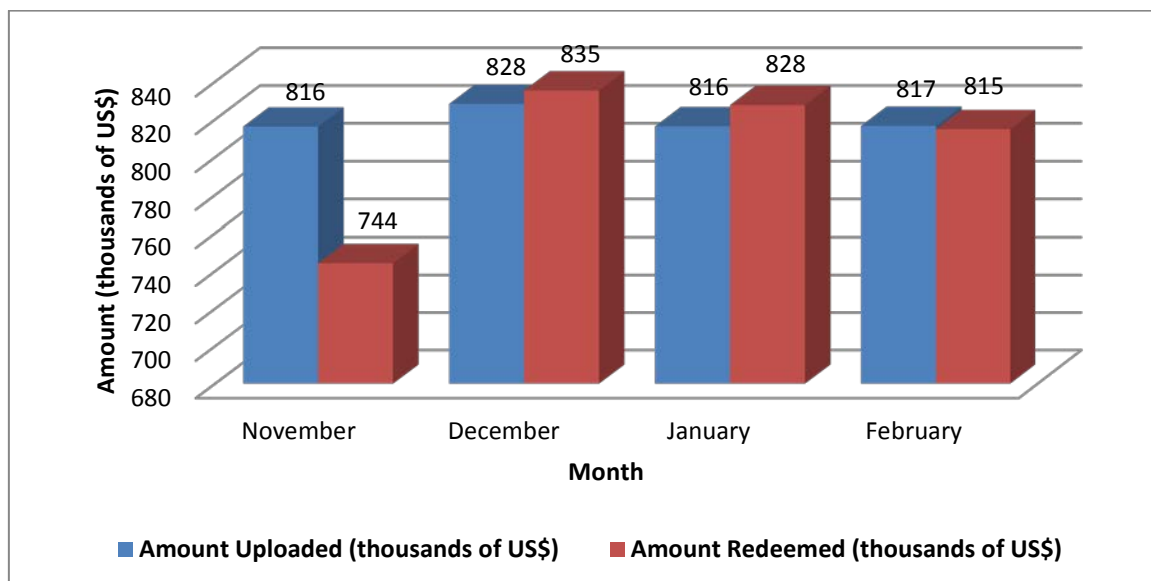


Map 1: Distribution of the E-Card Food Voucher Beneficiary HHs by Locality



From November 2014 till February 2015, the beneficiaries of the e-card food voucher redeemed US\$3.2 million of the UNHCR grant. On average, US\$819 thousands were uploaded monthly to the e-cards and US\$805 thousands were redeemed every month. The average redemption rate was 98%. Figure 1 shows the amount uploaded and redeemed by month. The month of November had the lowest redemption rate since not all the e-cards were activated by this month. A card is activated when the beneficiary HH receives the e-card, and not all the beneficiary HHs received their e-card by November.

Figure 2: Amount Uploaded and Redeemed by Beneficiaries of the E-Card Food Voucher per Month (thousands of US\$)

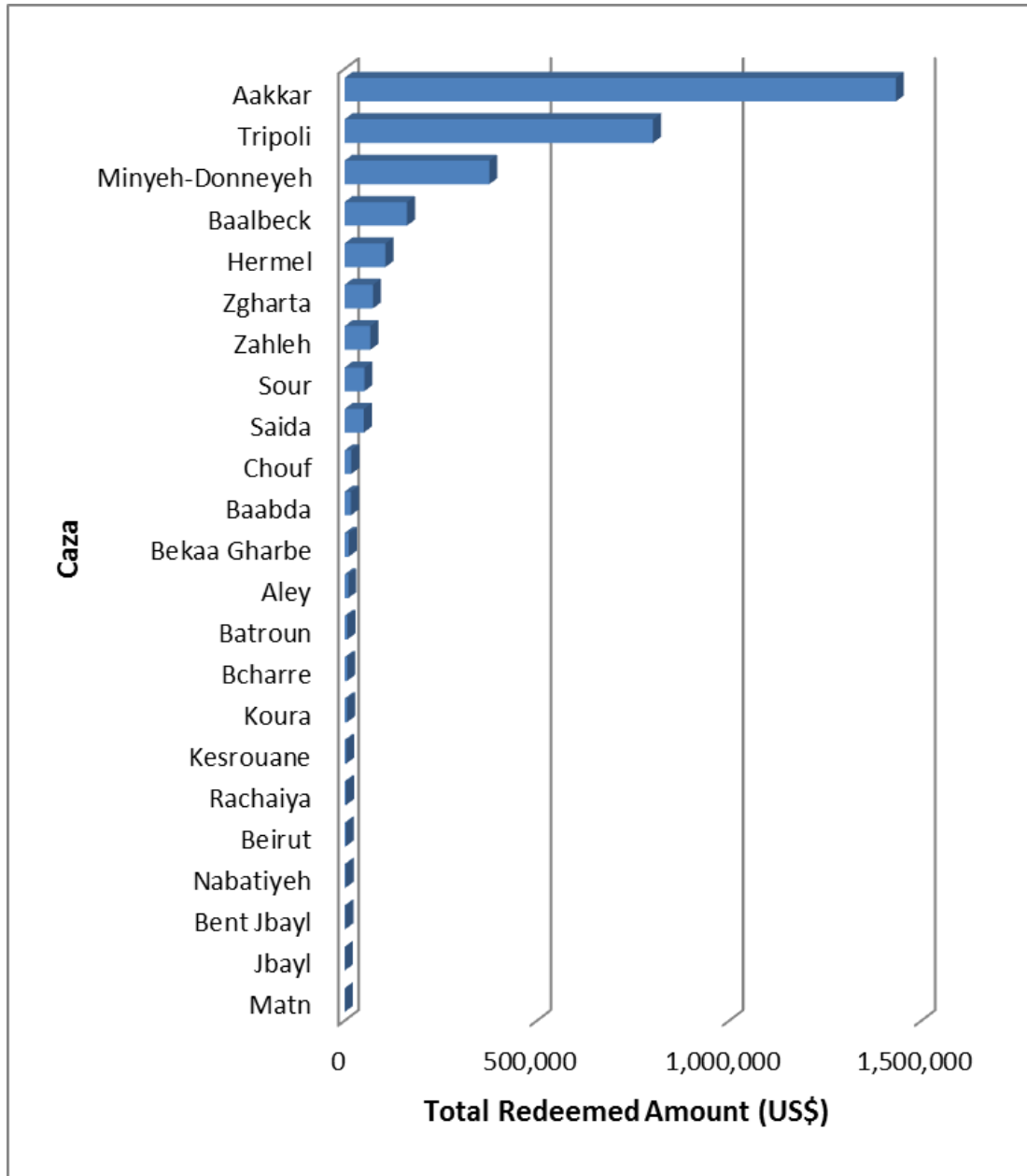


Five Caza had a share of 90% of the redeemed amount, with a total of US\$2.88 million, namely Aakkar, Tripoli, Minyeh-Donneyeh, Baalbeck and Hermel. On the other hand, 14 Caza had an individual share of less than 1% of the redeemed amount.

Table 3: Distribution of the Total Redeemed Amount, Number of Transactions and Average Amount per Transaction by Caza

Caza	Total Redeemed Amount (US\$)	Percent
Matn	861	0.03%
Jbayl	960	0.03%
Bent Jbayl	2,549	0.08%
Nabatiyeh	3,120	0.10%
Beirut	3,540	0.11%
Rachaiya	4,317	0.13%
Kesrouane	4,752	0.15%
Koura	6,882	0.21%
Bcharre	7,111	0.22%
Batroun	7,594	0.24%
Aley	9,873	0.31%
Bekaa Gharbe	11,267	0.35%
Baabda	16,525	0.51%
Chouf	17,425	0.54%
Saida	50,281	1.56%
Sour	51,867	1.61%
Zahleh	67,143	2.08%
Zgharta	73,940	2.29%
Hermel	106,668	3.31%
Baalbeck	162,565	5.05%
Minyeh-Donneyeh	376,420	11.68%
Tripoli	802,449	24.91%
Aakkar	1,433,830	44.50%
Total	3,221,937	100.00%

Figure 3: Total Redeemed Amount per Caza



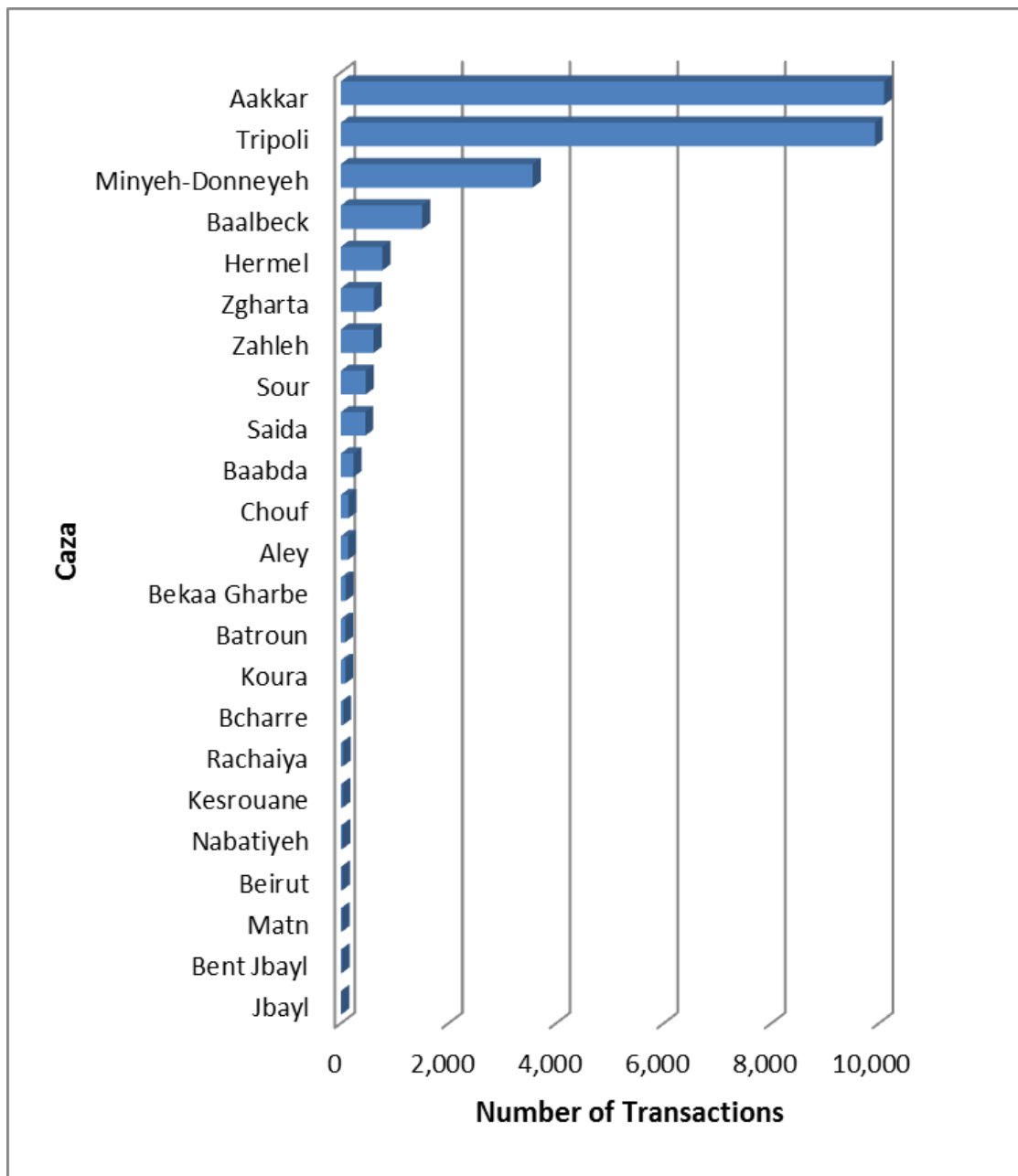
The total number of transactions made to redeem the US\$3.2 million was 28,998 transactions, 110\$ per transaction on average. During the month of November, 5,993 transactions were made, while during the next month, December, 7,886 were made, an increase of 31.5% compared to November. As for the month of January and February, 7,493 and 7,626 were made respectively.

The Caza of Jbayl recorded the lowest number of transactions of 11 while the Caza of Aakkar and Tripoli had the highest number of transactions with 10,099 and 9,925 respectively.

Table 4: Distribution of the Number of Transactions by Caza

Caza	Number of Transactions	Percent
Jbayl	11	0.04%
Bent Jbayl	19	0.07%
Matn	20	0.07%
Beirut	23	0.08%
Nabatiyeh	28	0.10%
Kesrouane	32	0.11%
Rachaiya	37	0.13%
Bcharre	43	0.15%
Koura	81	0.28%
Batroun	83	0.29%
Bekaa Gharbe	89	0.31%
Aley	136	0.47%
Chouf	141	0.49%
Baabda	238	0.82%
Saida	456	1.57%
Sour	464	1.60%
Zahleh	608	2.10%
Zgharta	613	2.11%
Hermel	775	2.67%
Baalbeck	1,512	5.21%
Minyeh-Donneyeh	3,565	12.29%
Tripoli	9,925	34.23%
Aakkar	10,099	34.83%
Total	28,998	100.00%

Figure 4: Distribution of the Number of Transactions by Caza



The transactions were made through 280 shops, contracted by WFP, and ranged from 1 to 2,224 transactions per shop during the period from November 2014 till February 2015. More than half of the transactions, 53.4%, were made during the afternoon period of the day and the rest, 46.5%, were made before noon.

Table 5: Distribution of the Number of Shops Used to Redeem the E-Card Food Voucher by Caza

Caza	Number of Shops	Percent
Jbayl	1	0.36%
Bcharre	2	0.71%
Beirut	3	1.07%
Matn	3	1.07%
Koura	3	1.07%
Rachaiya	3	1.07%
Batroun	4	1.43%
Nabatiyeh	4	1.43%
Bent Jbayl	4	1.43%
Kesrouane	5	1.79%
Zgharta	5	1.79%
Chouf	6	2.14%
Aley	6	2.14%
Minyeh-Donneyeh	9	3.21%
Hermel	9	3.21%
Saida	9	3.21%
Baabda	10	3.57%
Sour	10	3.57%
Bekaa Gharbe	13	4.64%
Tripoli	28	10.00%
Baalbeck	40	14.29%
Zahleh	41	14.64%
Aakkar	62	22.14%
Total	280	100.00%

Figure 5: Distribution of the Number of Shops used to Redeem the E-Card Food Voucher by Caza

